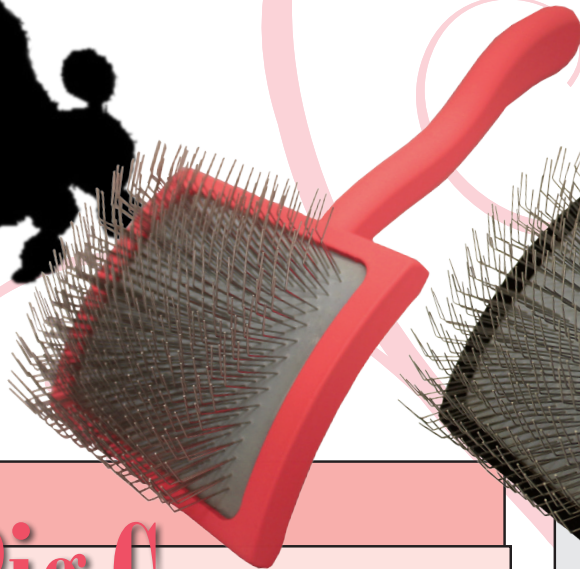


Chris Christensen

Big G Long Pin Slicker Brush ... dense

Big K Long Pin Slicker Brush ... sparse



Big G ... dense

Big G has 40% More Pins than Big K

Big G - When to use it:

To fluff curly, cottony coats, and to fluff and shape heads, toplines, and legs of many breeds

To work through dense coats all the way to the root

To remove thick undesirable undercoat in many breeds

Use Large on body and Medium on legs, columns and poms

Big G Large Item AVIICL **\$72.95**
Big G Medium Item AVIICM

Big K ... sparse

The Big K was originally designed for the unique needs of the Black Russian Terrier, but there are dozens of breeds that need this brush! *Does the job in half the time!*

Big K - When to use it:

To detangle and remove knots in long and difficult to manage coats

To get down to the root and remove hard-to-reach undercoat

To thin and separate hairs throughout the coat creating lift and volume

Use Large on torso and Medium on furnishings

Big K Large Item AVIIBL **\$72.95**
Big K Medium Item AVIIBM

Both the Big K and Big G:

Long Pins to penetrate deep into longer coats

Special Pin Bend creates lift and movement, to pick up more coat

Flexible Cushion, our signature flexible cushion is gentle and forgiving

Extreme Curved Back to allow more control, movement and direction

Extra Long Ergonomic Handle reduces hand and arm fatigue